

LTECH

EX3S Touch Panel (RGB)



EX3S

F3



Receiver

Manual

www.ltech-led.com

Product Features

- Adopt 2.4GHz RF wireless transmission technology, which is applicable for license and patent free worldwide.
- Advanced RF wireless synchronous control technology, be able to realize dimming, synchronous dynamic changing color effect between receivers.
- Support DMX512 signal output, can work as DMX master controller to control DMX fixture.
- Install touch panel at different areas, can control the same LED light, achieve multi-panel control, no quantity limited.
- Touch keys with chord and LED indicator.
- Saved the scene you like, touch 1 key to recall the scene, easy and convenient
- Adopts the capacitive touch control technology on the full color wheel, make the LED color selection more user-friendly.



Wireless



Scene-saved



Smart



Color selection



DMX512

1

LTECH

Technical Specs

EX3S RGB Touch Panel

Input Voltage:	100~240Vac	Dimensions:	L86×W86×H36(mm)
Output Signal:	RF 2.4GHz, DMX512	Package Size:	L113×W112×H50(mm)
Working Temp.:	-30°C~55°C	Weight(G.W.):	225g

F4-3A CV Receiver

Input Voltage:	5~24Vdc	Working Temp.:	-30°C~55°C
Current Load:	3A × 4CH Max. 12A	Dimensions:	L125×W33×H20(mm)
Max Output Power:	[0~15W...72W]×4CH Max. 288W	Package Size:	L127×W35×H24(mm)
Wireless Signal:	2.4GHz	Weight(G.W.):	60g

F4-5A CV Receiver

Input Voltage:	5~24Vdc	Working Temp.:	-30°C~55°C
Current Load:	5A × 4CH Max. 20A	Dimensions:	L175×W44×H30(mm)
Max Output Power:	[0~25W...120W]×4CH Max. 480W	Package Size:	L178×W48×H33(mm)
Wireless Signal:	2.4GHz	Weight(G.W.):	150g

F4-CC CC Receiver

Input Voltage:	12~48Vdc	Working Temp.:	-30°C~55°C
Output Voltage:	3~46Vdc	Dimensions:	L175×W44×H30(mm)
Output Current:	CC 350/700/1050mA×4CH	Package Size:	L178×W48×H33(mm)
Output Power:	[1.05W~48.3W]×4CH Max 193.2W	Weight(G.W.):	165g
Wireless Signal:	2.4GHz		

Note: Receiver is sold separately.

FC CE RoHS

warranty 5 years

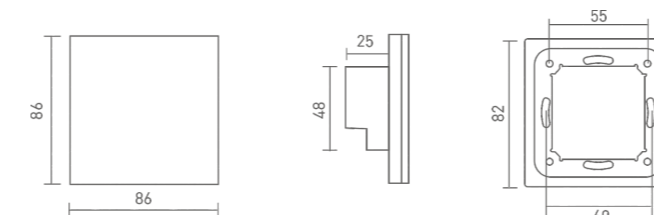
ISO9001:2008

2

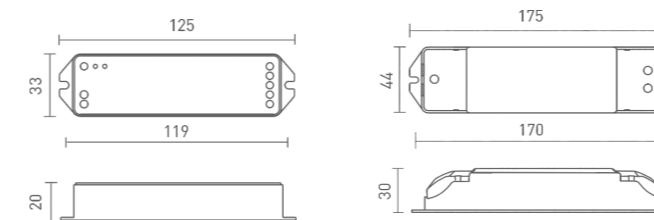
LTECH

Product Size

The unit: mm



EX3S



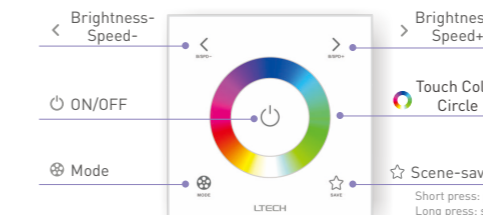
F4-3A

F4-5A/F4-CC

3

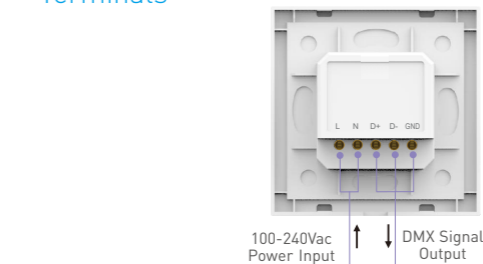
LTECH

Key Functions



- * When the touch panel is off, long press to turn on/off the buzzer
- When the touch panel is on, long press to match code.

Terminals

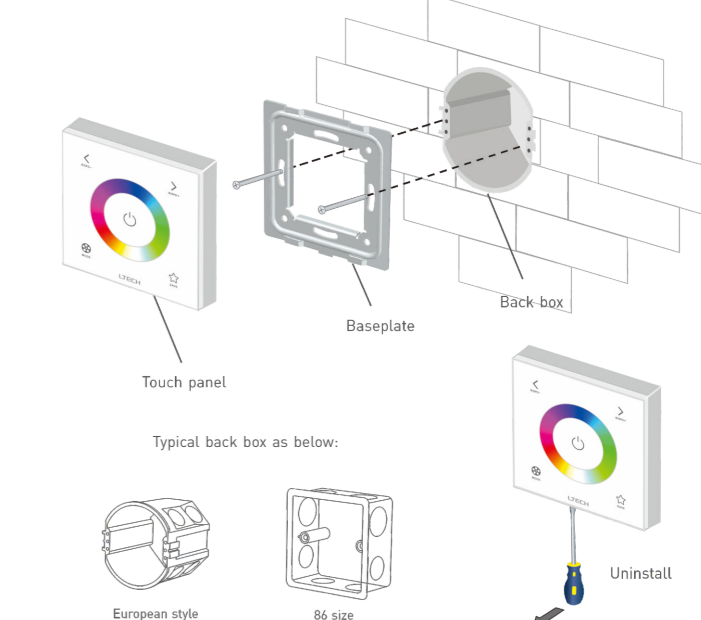


100-240Vac Power Input

DMX Signal Output

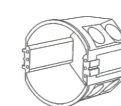
LTECH

Installation Instruction

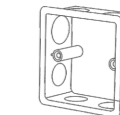


Touch panel

Typical back box as below:



European style



86 size

Uninstall

5

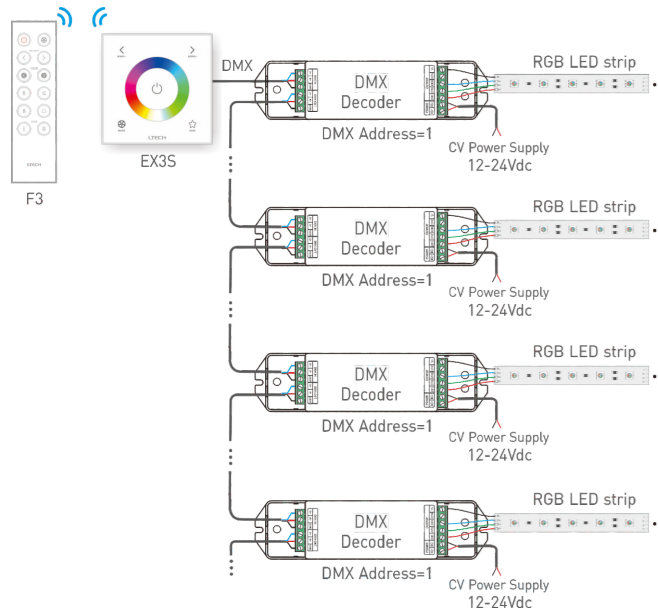
LTECH

Mode

1. Static Red
2. Static Green
3. Static Blue
4. Static Yellow
5. Static Purple
6. Static Cyan
7. Static White
8. RGB Jumping
9. 7 Colors Jumping
10. RGB Color Smooth
11. Full-color Smooth

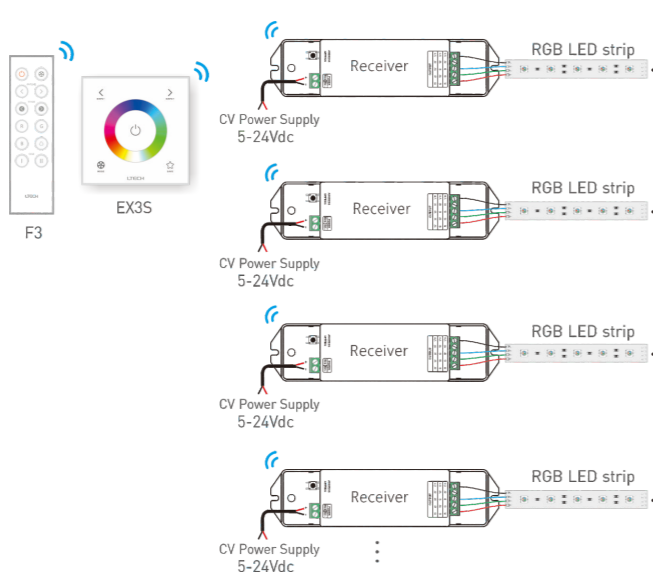
4

DMX Wiring



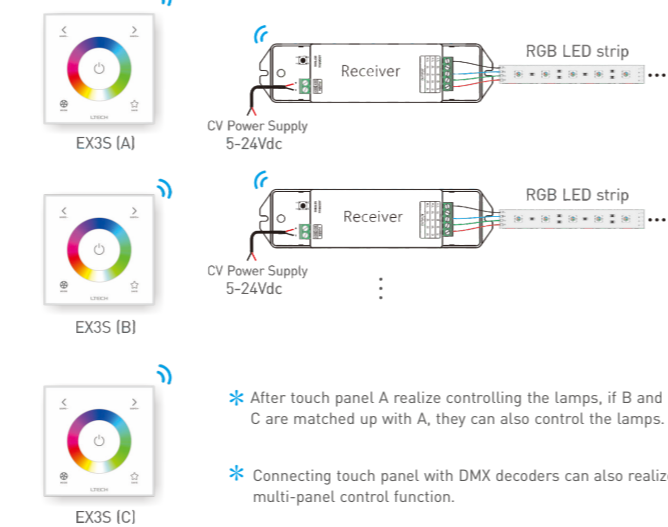
LTECH

RF Wireless Wiring



LTECH

Multi-panel Control Wiring



LTECH

Match code between Touch Panel & Receiver

LTECH

Match code:

Method 1 : When the touch panel is on and the wiring between receiver and lamps are correct.

1. Power on the receiver, and complete step 2 within 10s.
2. Long press on the touch panel, the lamps flicker.
3. Touch the color circle in 5s, if the lamps stop flicking, match successfully.

Method 2 : When the touch panel is on and the wiring between receiver and lamps are correct.

1. Short press "ID learning button" on the receiver.
2. Long press on the touch panel, the lamps flicker.
3. Touch the color circle in 5s, if the lamps stop flicking, match successfully.

Clear code:

Method 1: Power on and off the receiver continuously for 5 times, If the buzzer long beep and lamps flicker twice, deactivate the matching successfully.

Method 2: Long press "ID learning button" on receiver for 5 seconds, If the lamps flicker twice, deactivate the matching successfully.

Match Code between Touch Panels

LTECH

Match code:

1. Assuming that B match up with A, long press on B until all the indicator flicker.
2. Touch the color circle on A in 5s, if the indicator of B stop flicking, match successfully.
3. Press on B simultaneously about 3s, if the indicator light flicker several times, clear code successfully.

Match Code between Touch Panel & Remote

Touch panel match up with remote:

1. Long press on the touch panel until all the indicator flicker.
2. Long press on the remote, if the indicator light of touch panel stop flicking, match successfully.
3. Press on B simultaneously about 3s, if the indicator light flicker 3 times, clear code successfully.

Remote match up with touch panel:

1. Press on the remote simultaneously, the indicator light keeps on.
2. Touch the color circle on the touch panel, if the indicator of remote flicker twice, match successfully.
3. Long press on the remote simultaneously about 6s, if the indicator light keeps on, clear code successfully.

Warranty Agreement:

LTECH

- 1) We provide lifelong technical assistance with this product:
 - A 5-year warranty is given from the date of purchase. The warranty is for free repair or replacement if cover manufacturing faults only.
 - For faults beyond the 5-year warranty we reserve the right to charge for time and parts.
 - 2) Warranty exclusions below:
 - Any man-made damages caused from improper operation, or connecting to excess voltage and overloading.
 - The product appears to have excessive physical damage.
 - Damage due to natural disasters and force majeure.
 - Warranty label, fragile label and unique barcode label have been damaged.
 - The product has been replaced by a brand new product.
 - 3) Repair or replacement as provided under this warranty is the exclusive remedy to the customer. LTECH shall not be liable for any incidental or consequential damages for breach of any stipulation in this warranty.
 - 4) Any amendment or adjustment to this warranty must be approved in writing by LTECH only.
- ★This manual only applies to this model. LTECH reserves the right to make changes without prior notice.