

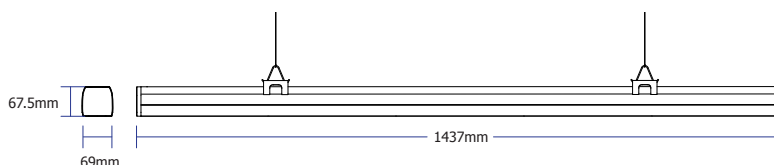


LED Linear Luminaire

Model NO.: L-L1-15XXX-XX-XX



Product Dimensions



- An energy-efficient, low maintenance alternative
- Saves money on installation and long-term operation
- The dimming of fixtures offers a great energy saving of up to 60%
- Fixtures quickly snap together for long continuous rows
- Suspended or surface mount
- Five application-specific beam angles
- Excellent lighting quality
- Standard dimming control: 0-10V, DALI control, sensor emergency lighting
- Can be extended endlessly via a range of add-on modules
- Fields of application: Industry, Shop & Retail, offices



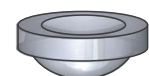
Mounting	Ceiling surfaced or suspended - determined for continuous installation
Finish	White polyester powder coat
Light distribution	Direct
Standard dimming control	0-10V or DALI control (For wireless controls please consult factory)
Electrical	AC 180V-240V
Materials	Housing: sheet steel Lenses: PMMA
Waterproof	IP54
UGR	<19
Surface finish	Housing: white (Other colours on request)
Linear light system	On request: Linear Trunking Rail Linear Suspension
Weight	2.6 kg
Service lifetime	50 000 hours / L80 B20 @ 35-40 °C 50 000 hours / L80 B10 @ 30 °C
Ambient temperature	- 20 °C ~ + 40 °C
Warranty	5-year limited system warranty standard

Luminaire Parameter

Power	LED Qty	Lumen	CRI	UGR	Dimming	Extra Modular Option
36W	165pcs	5000lm	>80	<19	DALI/0-10V	Emergency/ Motion Sensor
50W	165pcs	7150lm	>80	<19	DALI/0-10V	Emergency/ Motion Sensor
70W	165pcs	10000lm	>80	<19	DALI/0-10V	Emergency/ Motion Sensor

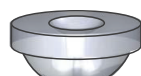
Light Distribution

WIDE BEAM



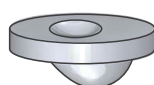
up to 8 metres
(assembly and
production facilities)

DOUBLE ASYMMETRIC BEAM



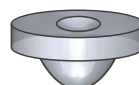
up to 3.5 metres
(supermarkets and
home depots)

ASYMMETRIC BEAM



up to 3.5 metres
(supermarkets and
home depots)

CONCENTRATED BEAM



up to 12 metres
(warehouses)

OMNI-DIRECTIONAL



up to 3.5 metres
(car parks, corridors, aisles and
walkways, or utility rooms)

Model NO.: L-L1-15XXX-XX-XX

Items		Specification	Tolerance	Test conditions
Electrical Data	Test Voltage	85-260V	±0.3%	
	Test Frequency	50/60Hz	/	
	Power Factor	0.9	Min	
Light Data	Color coordinates	4000K /5000K /6000K	≤5SDCM	
	Luminous Efficiency	140LM/W	Max	
	Colour rendering index (100h)	80Ra	Min	
	Lumen maintenance(50000h)	70%	Min	
	THD	20%	Max	
Photoelectric Parameters	Lens Angle	30/60/90/120/Polarized light 20°C	Min	
Lifetime	Average Lifetime	50000hrs	min	165'on/15' off cycles 15-40°C
Operation Condition	Rated Frequency	50/60Hz	/	
	Operation Voltage range	85V-260V	/	
	Operation Temperature range	-20°C~ +40°C	/	