

# Touch Switch Panel



K1



## 1. Technical Specs:

K1 Switch Panel

Input Voltage: 220V AC, 50Hz, LED(100-230V DC)

Load Type: LED lamps / Incandescent lamps

Fluorescent lamps

Energy-saving lamps

Max Load Power: 200W×1CH

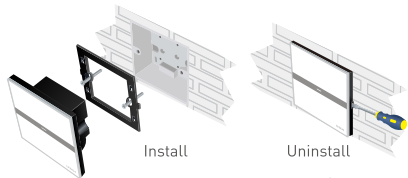
Min Load Power: : 5W×1CH

Working Temperature: -30°C~55°C

Package Size: L113×W112×H50(mm)

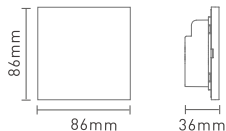
Weight(N.W.): 220g

## 2. Installation Instruction:

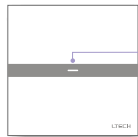


1

## 3. Product Size:



## 4. Knob Function:



Short press: light On/Off.

When power off, long press to turn on (off) the key tone.

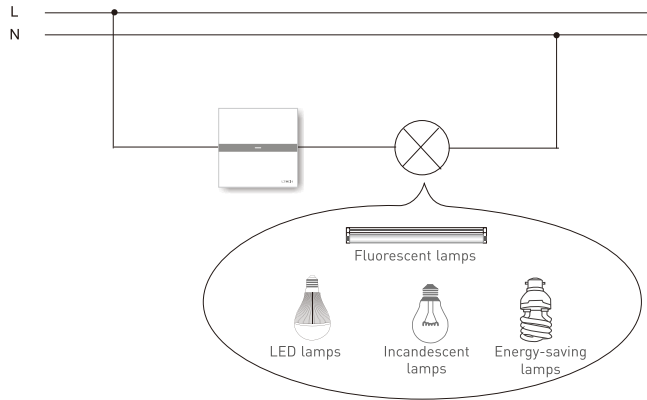
## 5. Terminals:



Power Input Socket

Lamp Connection Socket

## 6. Wiring Diagram



2