

# Mi·Light® User Instruction

WiFi iBox  
Model No.: iBox1

## Features

iBox is an upgraded WiFi box for Mi-light series, which is an exquisite light itself. The APP has new UI faces, and new functions. With easy link to the wifi router, you will be able to control the lights anywhere.



### App Long Distance Control

With WiFi & smart phone APP, you can control the lights anywhere, compatible with IOS, Android 4.3 or above.



### Compatibility

2.4GHz RF chip, compatible with all Mi-light series.



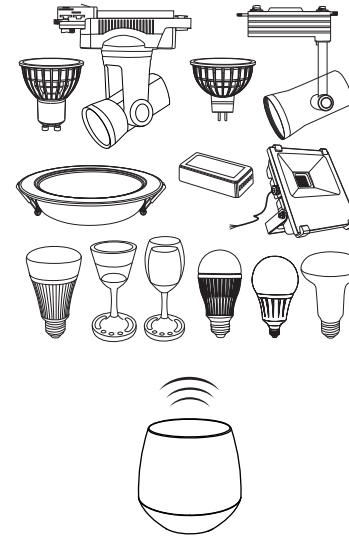
### Timer Function

Automatic ON/OFF with timer function



### Color Changing & Dimmable

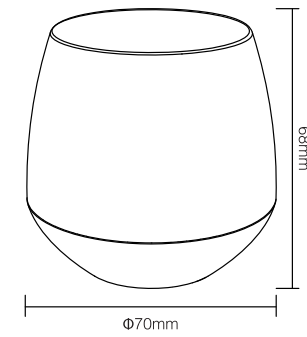
16 Millions of colors to choose, brightness dimmable.



Compatible with all Mi-light 2.4GHz series

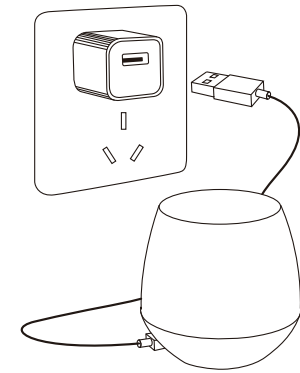
## Parameters

Model No.: iBox1  
Input: DC5V/500mA  
Power: 2W  
Color: RGB  
Protocol: 2.4GHz, WiFi 802.11b/g/n  
Size: Diameter 70mm, Height 68mm  
GW: 50g



## Instructions

Supply power for the device with USB power adapter, DC5V/500mA.



## APP Download

Search 'Miight' from Apple store, or scan the code shown on the left.  
Search 'Miight' from Google Play store, or scan the code shown on the left. (Android 4.3 or above.)

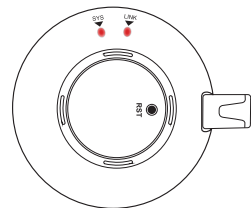


## Smart Configuration

1 Open WLAN via mobile phone, connect to the wireless router.



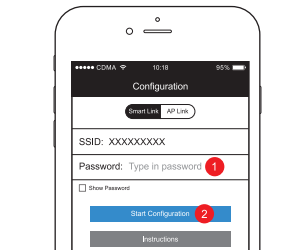
2 Press 'RST' (The SYS indicator light flickers, the LINK indicator light flashes.)



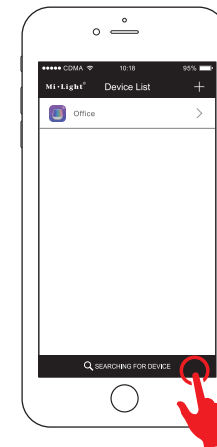
3 Open Mi-light APP, press + to start Configuration



4 Type in your wireless password, press 'Start Configuration'



5 After the configuration is successful, return to devices list., click to search device, then You can control it through the phone .



## Caution

1. Cannot exposure to sunshine in case of aging.
2. Avoid contact with corrosive liquids, ie strong alkaline liquid.
3. Pay attention to fire, moisture, fall off
4. Working temperature -40 C -10 C, storage temperature -20 C~60 C.

